

POPULATION

This report is one in a series profiling Poole produced by the Corporate Research Team. These reports have been designed to help inform service and policy planning, by summarising available research and statistical evidence. They provide a top level view of specific subject areas and identify contacts and websites for people who would like more detailed information.

Purpose of this Report

This report outlines the current demographic profile of Poole, and considers possible changes in its population over the next twenty years. It raises the key issues facing the Borough and its partners as they strive to deliver improved public services that meet local need.

Key Points

Population is dynamic and therefore needs careful monitoring to ensure policy decisions continue to reflect the needs of local people. Key trends and emerging issues identified in this paper include:

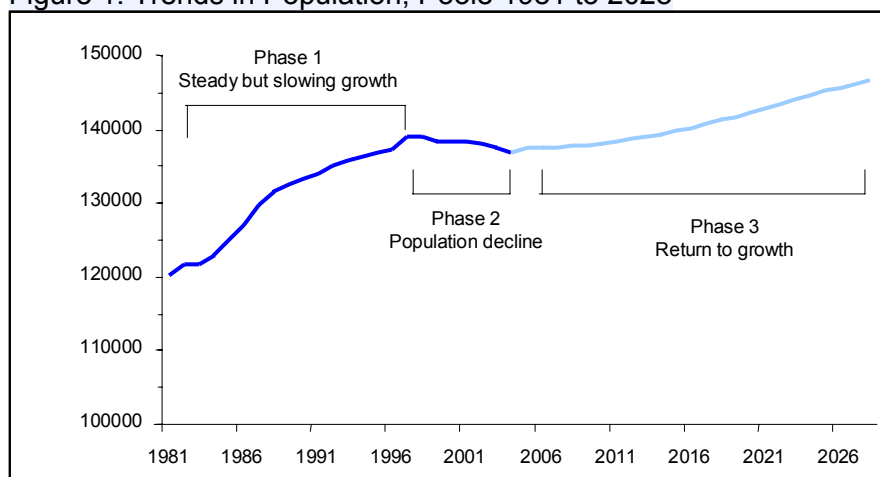
- **Increase in population**
 - Increased demand for housing
 - Increasing house prices
 - Increased demand for local authority services
- **Decrease in number of children**
 - Impact on education and nursery provision
- **Decrease and ageing of working age population**
 - New skills shortage
- **Increase in the elderly**
 - Impact on health and social services
 - Increased demand for leisure services
 - Implications for transport provision and mobility

Trends in Total Population

Three phases can be identified in Poole's population trends since the early 1980s (**Figure 1**):

1. **Steady but slowing growth up to the late 1990s.** Poole's population increased by almost 16% from 120,300 to 139,100 between 1981-1998, however while the annual growth rate peaked at 2.2% for 1986-87 this levelled off to 0.06% by 1997-98.
2. **Population decline from 1998 to the present time.** Poole is one of only two local authorities within the South West Region, that has experienced population decline between 1998 and 2004, by -1.5% from 139,100 to 137,000. Conversely the populations of England and Wales and the South West Region have grown by 3% and 4% respectively.
3. **Likely return to growth** as housing developments in the central area are completed. The ONS 2003 based projections predict that Poole's population will increase by 7% to 146,600 between 2005 and 2028.

Figure 1: Trends in Population, Poole 1981 to 2028

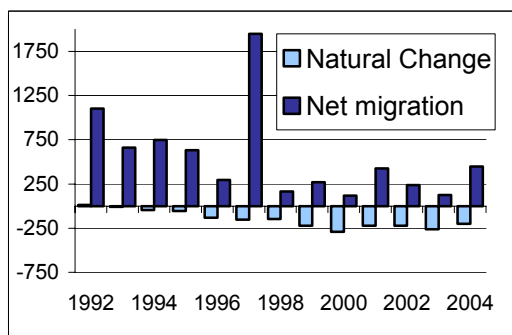


Source: ONS Mid Year Estimates 1981 to 1994, ONS 2003 based Population Projections 2005 to 2028
Available online at www.ons.gov.uk

Components of Population Change

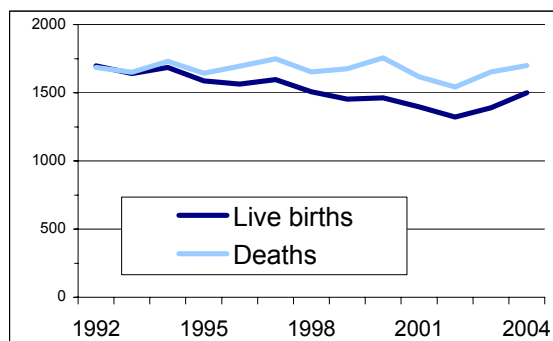
Population change is determined by three components, the balance of births and deaths (natural change), and the balance of in and out migration (net migration). **Figures 2 and 3** clearly illustrate the basis for the population trends to 2004.

Figure 2: Components of population change, Poole 1992 to 2004



Source: ONS MYE Components and FHS 1998-2004

Figure 3: Live births and deaths, Poole 1992 to 2004



Source: ONS Vital Statistics (VS1)

Phase 1 – Steady but slowing growth 1981-1998, was characterised by:

- Increasing, negative rates of natural change. This resulted from falling numbers of births (-11% 1991-98), compared to relatively stable numbers of deaths (-2% 1991-98), see **Figure 3**.
- Relatively high but fluctuating levels of net in migration (**Figure 2**).

Phase 2 – Population decline 1998-2004, is characterised by:

- Continued, negative rates of natural increase. Slight recovery in the number of births mirrored by increase in number of deaths (**Figure 3**).
- Falls in the level of net in migration (**Figure 2**)

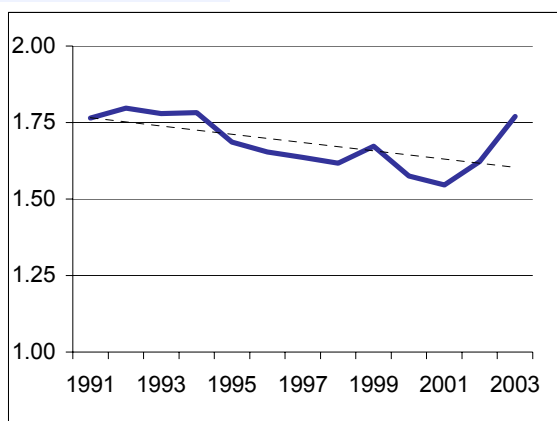
Births and Fertility

The fall in births reflects an actual decline in women's propensity to have children, as measured by the fertility rate (TFR). This measures the number of children born to a woman throughout her life.

The TFR for Poole fell by nearly 12% between 1991 and 2001 from 1.76 to 1.55 children (**Figure 4**). This compares to a fall of 10% for England and Wales from 1.82 to 1.64 for the same period. The TFR for Poole has recovered slightly to 1.77 for 2003, a rate now higher than the average of 1.71 for England and Wales. However, this increase is not spread evenly across age groups.

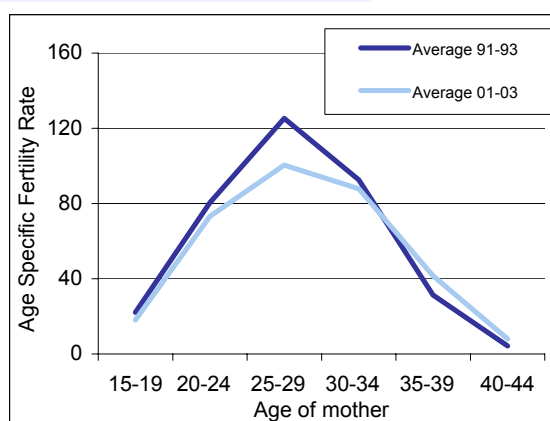
Women are choosing to have children later in life, as illustrated by the decline in the fertility rate of young women in their 20s and the corresponding rise among women aged 30+ (**Figure 5**).

Figure 4: Total Fertility Rate, Poole 1991 to 2003



Source: ONS Vital Statistics (VS1 and VS2)

Figure 5: Age Specific Fertility Rates Compared, Poole 1991-1993 vs 2001-2003



Deaths and Mortality

For the last three decades, and with accelerating pace, there have been substantial reductions in late age mortality. Poole's life expectancy at birth for males has increased by 2.5 years between 1991-2003, and by 1.6 years for females (**Table 6**). Poole has significantly higher levels of life expectancy for both males and females than England and Wales overall, ranking in the top 12% of local authorities in the country. Significant variations exist within Poole, life expectancies range from 77.5 years in Poole Town, to 83.3 years in Broadstone based on calculations for 1998-2002.

Table 6: Life Expectancy at birth (3 year averages), Poole vs England and Wales 1991 to 2003

	1991-93	1992-94	1993-95	1994-96	1995-97	1996-98	1997-99	1998-00	1999-01	2000-02	2001-03
Males Poole	75.7	75.9	75.9	75.9	75.9	76.5	77.0	77.5	77.9	78.0	78.2
Males E&W	73.7	74.0	74.1	74.4	74.6	74.9	75.1	75.4	75.7	76.0	76.2
Females Poole	80.5	80.7	80.9	81.3	81.2	81.5	81.5	81.6	81.8	81.9	82.1
Females E&W	79.2	79.4	79.5	79.7	79.8	79.9	80.0	80.2	80.4	80.7	80.7

However, despite these improvements, the number of deaths has not fallen (Figure 3). Between 1990 and 2004 they have remained relatively stable at around 1600 deaths per year. This is due to a rise in the elderly population (+10% from 19,500 to 21,400 between 1991-2004 of people aged 70+).

Migration

Migration flows within the UK are monitored using records of patient registrations with NHS doctors (NHSCR). The register shows lower levels of net migration since 1998 (**Figure 2**), as the number of people moving to Poole has fallen. The 2001 Census shows Poole Town ward as having the largest migrant population, with 17.6% having had a different address a year before the Census. Oakdale has the smallest migrant population with only 8.1%.

Population Forecasts

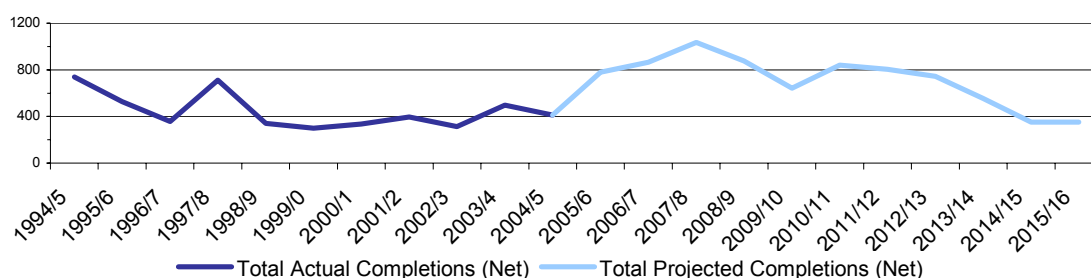
The 2003 based sub-regional population projections produced by ONS suggest that the population of Poole will increase steadily over the next 25 years, despite its recent decline (**Figure 1**). They indicate that Poole's population will increase by 7% overall to 146,600 by 2028. However, these projections assume recent trends in births, deaths and migration continue, and so do not reflect the impact of future development policies on the population of an area.

The housing trajectory for Poole (**Figure 7**), which illustrates past and likely future levels of housing development to 2016, may underline a slightly different pattern. It suggests a sharp net rise in housing completions from around 400 in 2004/5 to over 1000 in 2006/7, a further peak of around 840 in 2010/11, followed by a steep decline to just over 200 completions by 2016/17. Over 50% of this development to 2012/13 will take place in the Central Regeneration Area.

While new housing will not always translate into an increase in population, given the trend towards smaller households. It is likely that Poole's population will increase more sharply than the ONS projections suggest in the short-term to 2015/16. Thereafter, it is likely that the population growth in Poole will tail off, as levels of new development fall.

This pattern will become clearer once the local Bournemouth, Dorset and Poole Population Projections are published in the new year. Further details of these will be posted on the Statistics for Poole website at www.poole.gov.uk.

Figure 7: Past and anticipated housing development, Poole 1994-2016



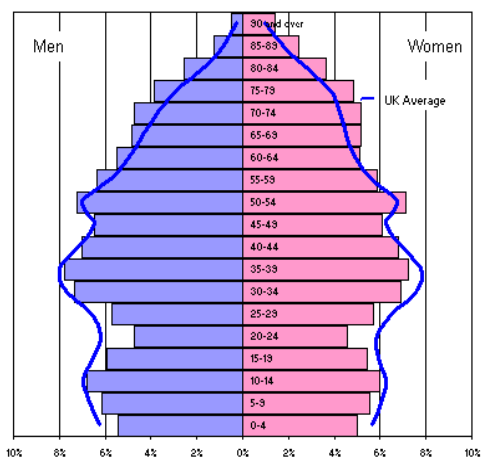
Source: Policy, Planning and Implementation Unit, Strategic Planning, BOP

However, while rates of growth differ between ONS and local BDP Projections, both agree that the rise in population will not be distributed evenly across age groups. This will undoubtedly lead to further ageing of the population age structure.

Ageing Population

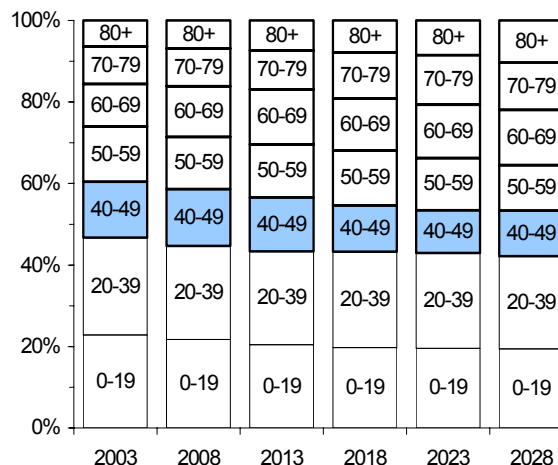
Figure 8 shows Poole's population age structure at the 2001 Census, and indicates how it differs to the national average. Poole has a smaller proportion of its population in all five year age bands under 50, and a greater proportion in all age bands over 50, across both sexes.

Figure 8: Population Age and sex pyramid, Poole vs UK 2001 Census



Source: ONS Census 2001

Figure 9: Changing age structure of Poole 2003-28

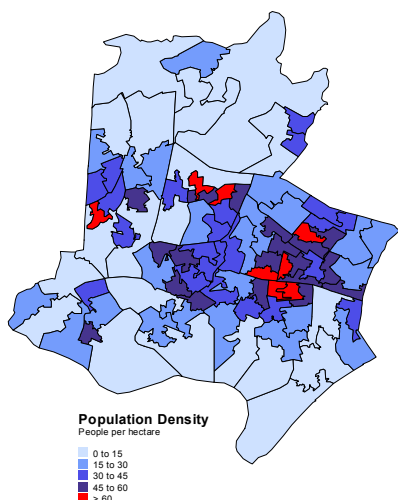


Source: ONS 2004, 2003-based Population Projections
Available online at www.ons.gov.uk

A clear picture of the ageing process emerges when the share of the population in different age groups is examined (**Figure 9**). This shows the progressive percentage increase between 2003 to 2028 of those aged 50+ (from 40% to 47%), and the percentage decrease of those aged 20-49 (from 38% to 34%) over the same period. This will have vital implications for the age structure of the labour force with fewer young workers and more aged 50+.

Spatial Distribution

Map 10: Population Density at Super Output Area, Poole (people per hectare)



Source: ONS Census 2001

The most densely populated areas of Poole according to the 2001 Census are shown in **Map 10**.

The average density of people within Poole is 21.4 people per hectare (pph). This compares with 3.4 pph for England and Wales as a whole and 1.5 pph for Dorset. While this may seem relatively high, there are authorities where the density exceeds 100 pph, although all these are in London.

Within the Borough, there are also significant variations. Ward densities vary from over 50 pph in Branksome West to about 6 pph in Merley and Bearwood.

For further information on the Population of Poole and related issues contact:

Corporate Research at the Borough of Poole on 01202 633361,
or visit **Statistics for Poole at www.boroughofpoole.com**

Last updated Nov. 2005