

## The 2004 Index of Deprivation

### 1. Introduction

1.1 The Office of the Deputy Prime Minister has published the 2004 Index of Deprivation. This updates and revises the previous (2001) index.

The main revisions are:

- The 2004 Index uses a new geography. Rather than the ward-based index that was used last time, this Index has been published at Super Output Area
- The 2004 Index is broken down into seven deprivation domains (compared to five in 2001). The domains are:
  - Income
  - Employment
  - Health deprivation and disability
  - Education skills and training deprivation
  - Barriers to Housing and Services
  - Living Environment
  - Crime
- There are two supplementary Indices. These are Income deprivation affecting Children and Income deprivation affecting Older People.

### 2. Super Output Areas

2.1 Super Output Areas are the new geography that the Office of National Statistics have adopted for the release of statistics. They are based on aggregates of the Output Areas that were created for the release of small area census statistics.

2.2 ONS's intention was to create a set of areas that were consistent in size nationally (unlike wards which range from less than 1000 population in some rural areas to over 30,000 in cities like Birmingham).

2.3 Within Poole there are 91 Super Output Areas. Within England there are 32,482 Super Output Areas.

### 3. The Index

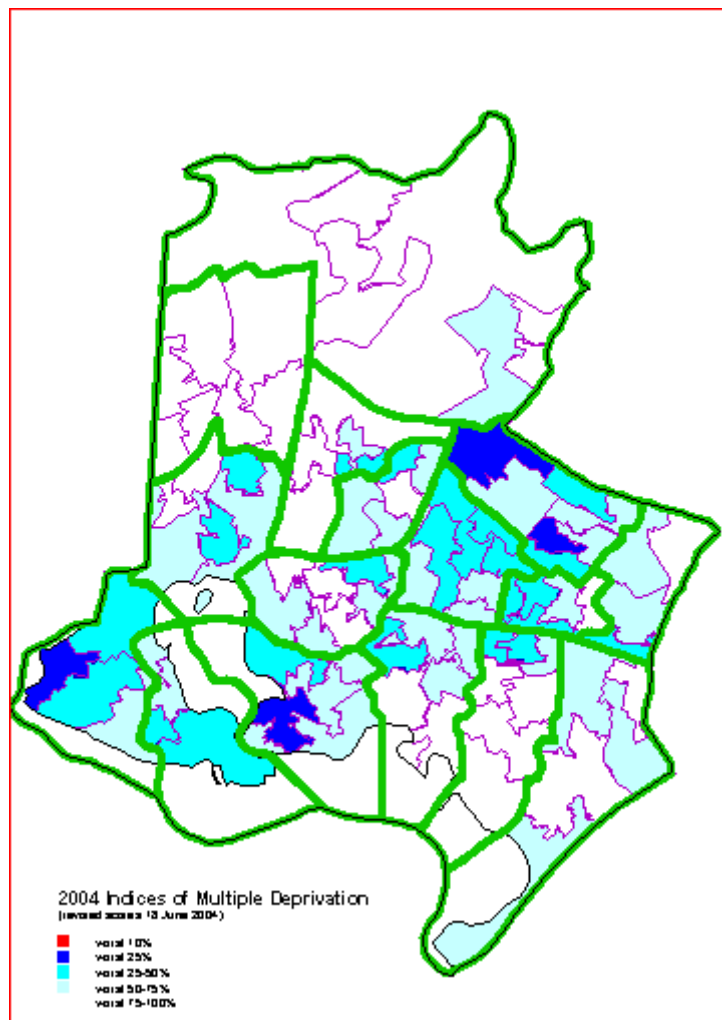
3.1 The following summarises the main results for Poole. At the District level, Poole ranks 225<sup>th</sup> out of 354 local authorities (between 50% and 75% of rankings). Its rankings for the employment and income domains is shown in the following table.

Domain	Poole's ranking out of 354 local authorities (where 1 <sup>st</sup> =worst)
Rank of average score	225
Income Domain	144
Employment Domain	166

**3.2 Multiple Deprivation.** There are no SOAs within the worst 10% in the Country for the overall IMD score, however there are 4 within the worst 25% of SOAs nationally. These are in Hamworthy West (Turlin Moor), Alderney (Melbury Avenue/Arne Avenue Area and the Bedford Road and Belbin Avenue Area), Poole Town Centre.

**3.3** Over a third of Poole SOAs fall within the 25% of SOAs that are the least deprived in England.

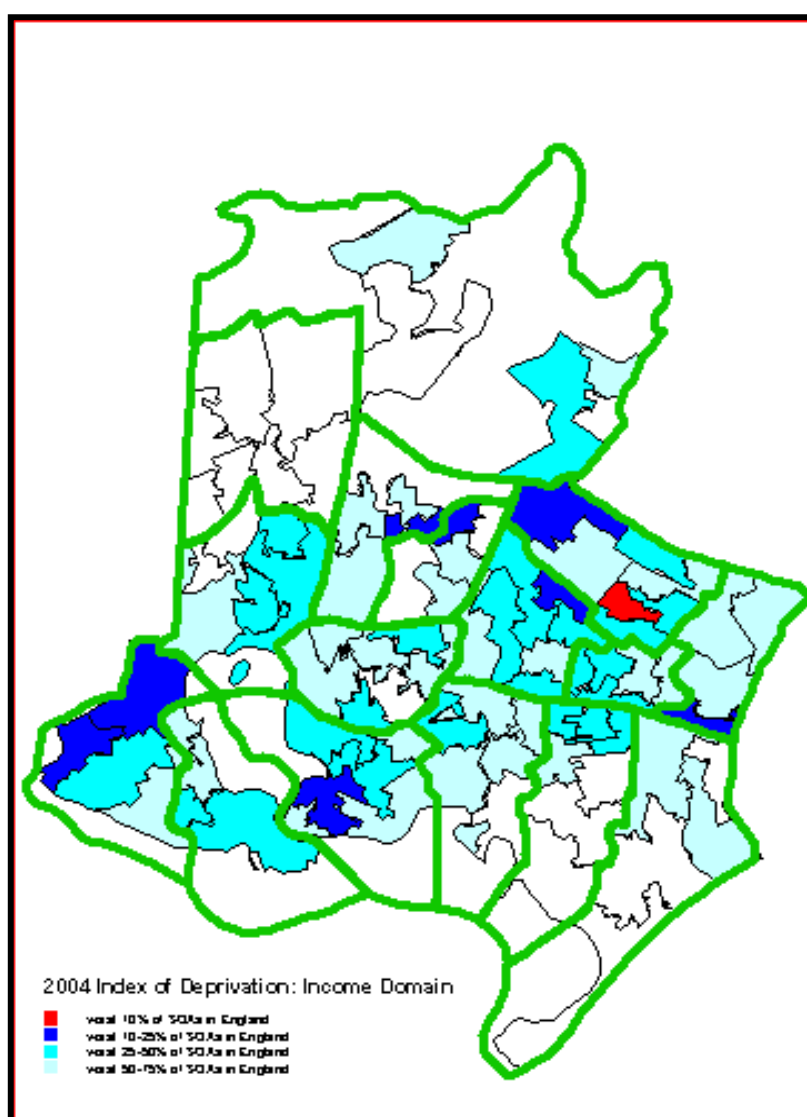
	Number of Poole SOAs in each range
Worst 10% in England	0
Worst 10-25% in England	4
Worst 25-50% in England	23
Worst 50-75% in England	32
Worst 75-100% in England	32



3.4 **Income Domain:** There is one Super Output Area (SOA) in the worst 10% in the country and a further 8 in the worst 25% of SOAs. The SOA in the worst 10% is within Alderney (Melbury Avenue/Arne Avenue area).

3.5 Over a quarter of Poole's SOAs fall within the 25% of SOAs that are the least deprived areas nationally on this measure.

	Number of Poole SOAs in each range
Worst 10% in England	1
Worst 10-25% in England	8
Worst 25-50% in England	25
Worst 50-75% in England	33
Worst 75-100% in England	24



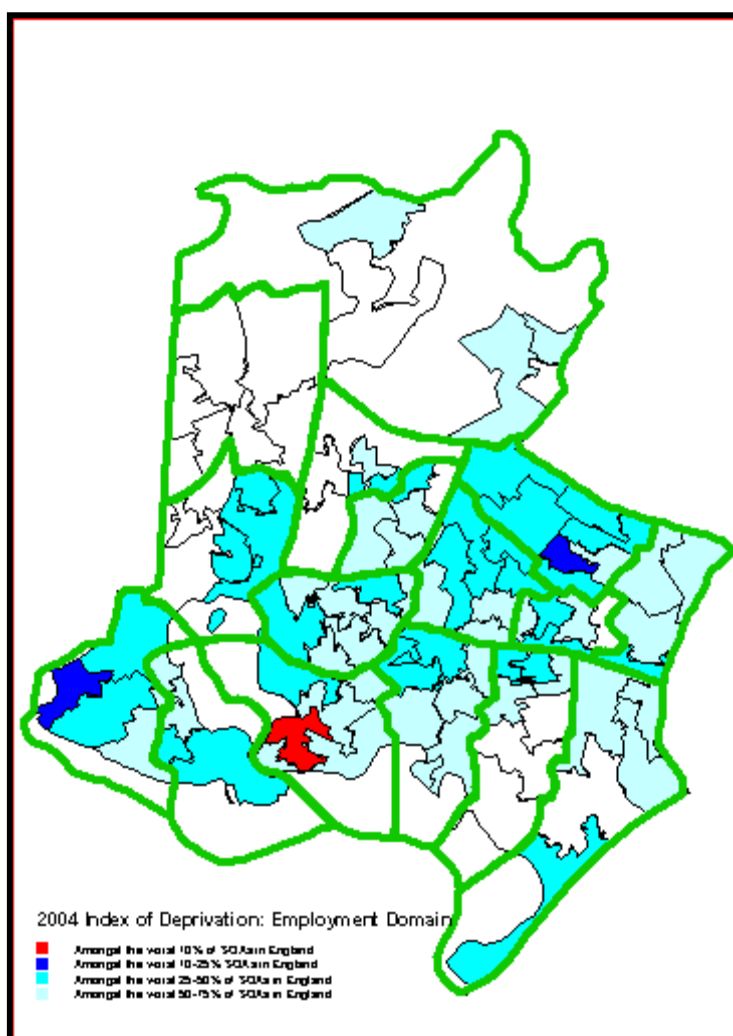
Domain includes:

- Adults and children in Income Support households (2001).
- Adults and children in Income Based Job Seekers Allowance households (2001).
- Adults and children in Working Families Tax Credit households whose equivalised income (excluding housing benefits) is below 60% of median before housing costs (2001).
- Adults and children in Disabled Person's Tax Credit households whose equivalised income (excluding housing benefits) is below 60% of median before housing costs (2001).
- National Asylum Support Service supported asylum seekers in England in receipt of subsistence only and accommodation support (2002).

**3.6 Employment Domain:** There is one SOA in the worst 10% in the country and a further two in the worst 25% (see fig 2). The SOA in the worst 10% is in Poole Town centre, covering the Skinner Street, Lagland Street and New Orchard areas. The two other areas in the worst 25% cover parts of Turlin Moor and the Melbury Avenue/Arne Avenue part of Alderney ward described above.

3.7 Over a quarter of Poole's SOAs fall within the 25% of SOAs that are the least deprived areas nationally on this measure..

	Number of Poole SOAs in each range
Worst 10% in England	1
Worst 10-25% in England	2
Worst 25-50% in England	29
Worst 50-75% in England	36
Worst 75-100% in England	23



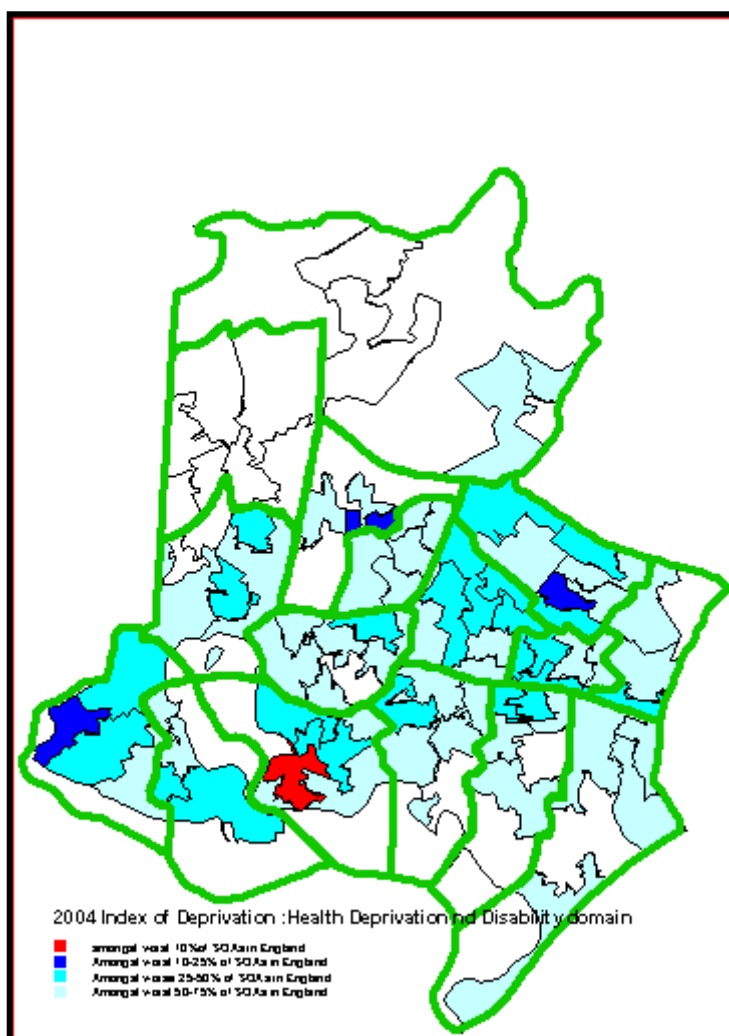
Domain includes:

- Unemployment claimant count (JUVOS) of women aged 18-59 and men aged 18-64 averaged over 4 quarters (2001).
- Incapacity Benefit claimants women aged 18-59 and men aged 18-64 (2001).
- Severe Disablement Allowance claimants women aged 18-59 and men aged 18-64 (2001).
- Participants in New Deal for the 18-24s who are not included in the claimant count (2001).
- Participants in New Deal for 25+ who are not included in the claimant count (2001).
- Participants in New Deal for Lone Parents aged 18 and over (2001).

**3.8 Health Deprivation and Disability Domain.** There is one SOA in the worst 10% in the country and a further three in the worst 25%. The SOA that is nationally in the worst 10% of SOAs is in Poole Town Ward, covering the Lagland Street, Skinner Street and New Orchard area. The three other areas that feature in the worst 25% of SOAs are part of Turlin Moor, the Melbury Avenue/Arne Avenue part of Alderney and the Puddletown Crescent, Redhoave Road and Knowlton Road parts of Canford Heath West.

3.9 Just under a quarter of Poole's SOAs fall within the 25% of SOAs that are the least deprived areas nationally on this measure.

	Number of Poole SOAs in each range
Worst 10% in England	1
Worst 10-25% in England	3
Worst 25-50% in England	23
Worst 50-75% in England	42
Worst 75-100% in England	22



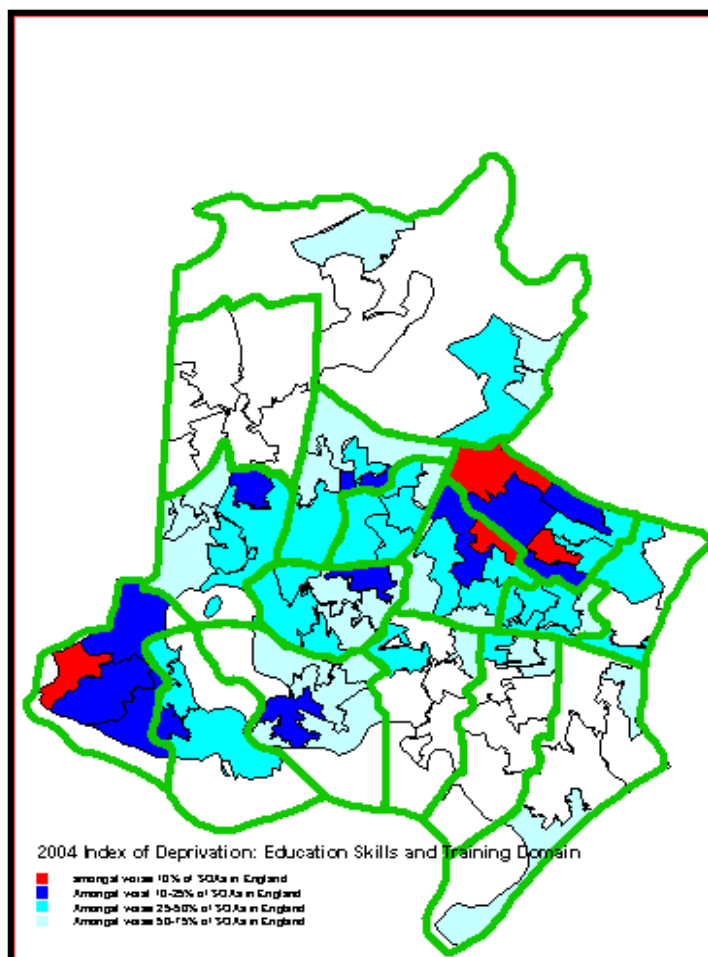
Domain includes:

- Years of Potential Life Lost (1997-2001).
- Comparative Illness and Disability Ratio (2001).
- Measures of emergency admissions to hospital (1999-2002).
- Adults under 60 suffering from mood or anxiety disorders (1997-2002).

3.10 **Education, Skills and Training Deprivation Domain.** There are four SOAs within the worst 10% within England and a further twelve within the worst 25%. Two of the SOAs that are amongst the worst 10% nationally are within Alderney – the Melbury Avenue/Arne Avenue area and the Belbin Road/Bedford Road areas. The other two are in Newtown, adjacent to Trinidad School and parts of Turlin Moor in Hamworthy West.

3.11 Over a quarter of Poole's SOAs fall within the 25% of SOAs that are the least deprived areas nationally on this measure..

	Number of Poole SOAs in each range
Worst 10% in England	4
Worst 10-25% in England	12
Worst 25-50% in England	28
Worst 50-75% in England	24
Worst 75-100% in England	23



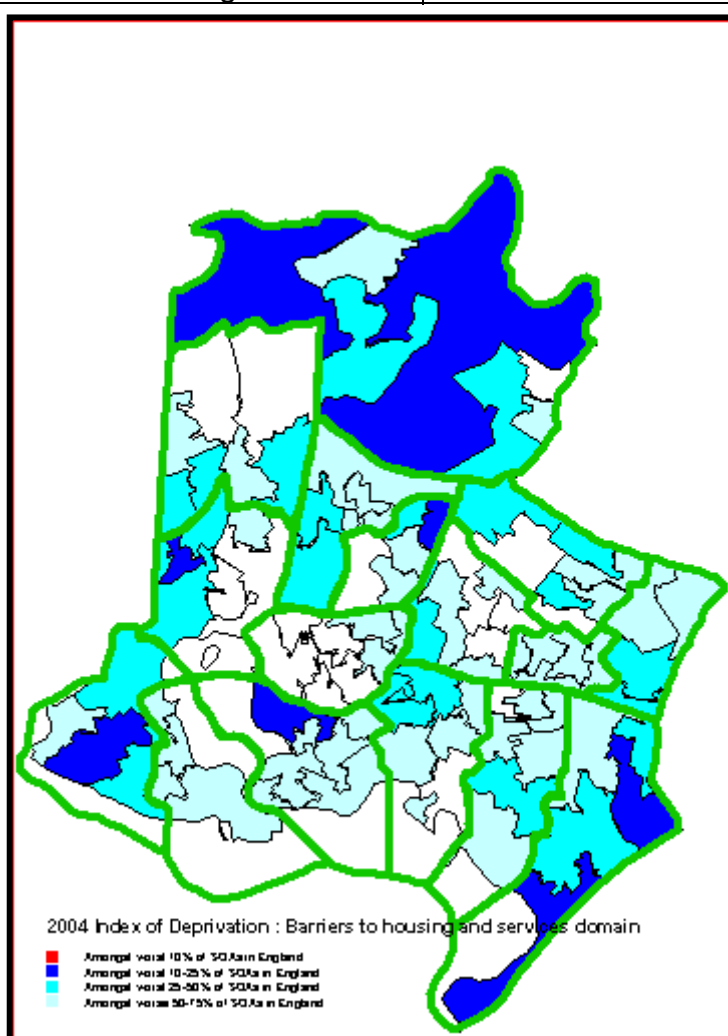
Domain includes:

- Average points score of children at Key Stage 2 (2002).
- Average points score of children at Key Stage 3 (2002).
- Average points score of children at Key Stage 4 (2002).
- Proportion of young people not staying on in school or school level education above 16 (2001).
- Proportion of those aged under 21 not entering Higher Education (1999-2002).
- Secondary school absence rate (2001-2002).
- Proportions of working age adults (aged 25-54) in the area with no or low qualifications (2001).

3.12 **Barriers to Housing and Services Domain.** There are no SOAs within the worst 10% of SOAs nationally, however there are eight within the worst 25% of SOAs nationally. These are spread over six wards: Merley and Bearwood, Canford Cliffs, Canford Heath East, Creekmoor, Hamworthy West and Poole Town.

3.13 Just under a fifth of Poole's SOAs fall within the 25% of SOAs that are the least deprived areas nationally on this measure.

	Number of Poole SOAs in each range
Worst 10% in England	0
Worst 10-25% in England	8
Worst 25-50% in England	23
Worst 50-75% in England	42
Worst 75-100% in England	18



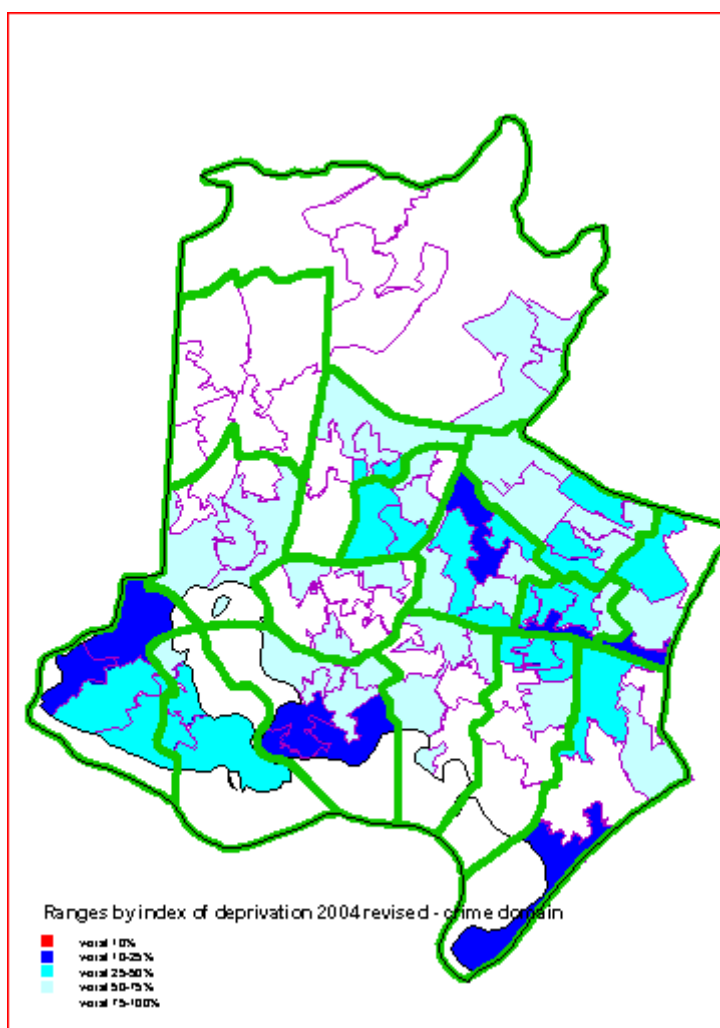
Domain includes:

- Household overcrowding (2001).
- LA level percentage of households for whom a decision on their application for assistance under the homeless provisions of housing legislation has been made, assigned to SOAs (2002).
- Difficulty of Access to owner-occupation (2002).
- Road distance to GP premises (2003).
- Road distance to a supermarket or convenience store (2002).
- Road distance to a primary school (2001-2002).
- Road distance to a Post Office (2003).

3.15 **Crime Domain.** There are no SOAs within the worst 10% of SOAs nationally, however there are 8 within the worst 25% of SOAs. These are in Turlin Moor, within the Town Centre area, along the northern side of Ashley Road, Sandbanks and parts of Newtown.

3.16 Over a third of Poole's SOA are amongst the 25% of SOAs nationally that are least deprived by this measure

	Number of Poole SOAs in each range
Worst 10% in England	0
Worst 10-25% in England	8
Worst 25-50% in England	22
Worst 50-75% in England	30
Worst 75-100% in England	31



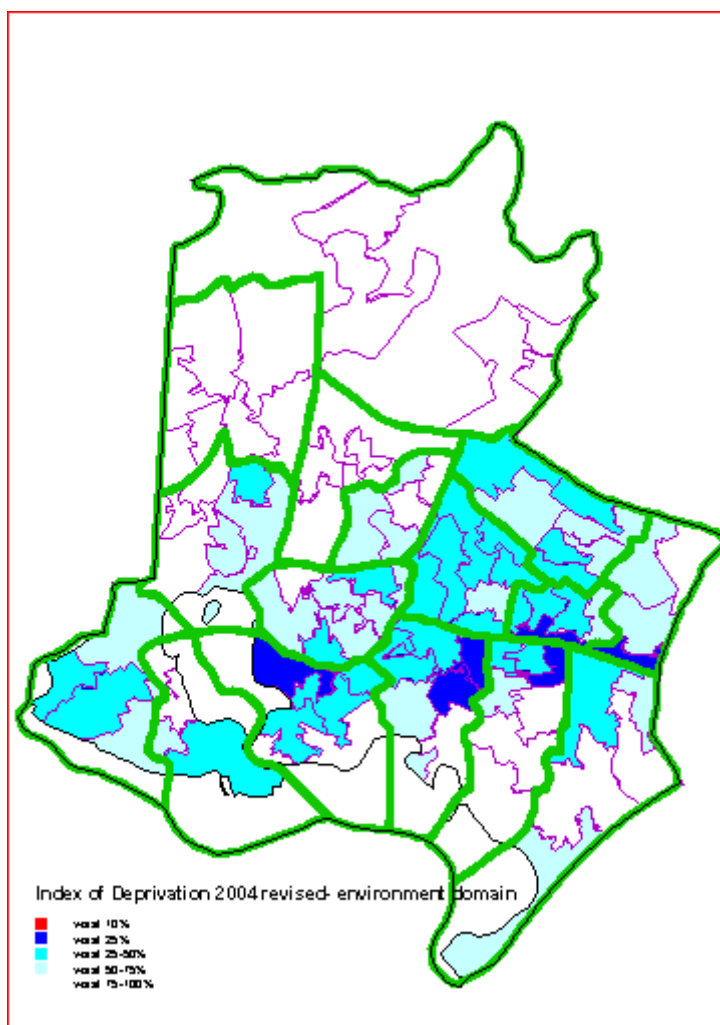
Domain includes:

- Burglary (4 recorded crime offence types, April 2002-March 2003).
- Theft (5 recorded crime offence types, April 2002-March 2003, constrained to CDRP level).
- Criminal damage (10 recorded crime offence types, April 2002-March 2003).
- Violence (14 recorded crime offence types, April 2002-March 2003).

3.17 **The Living Environment.** There are no Poole SOAs amongst the worst 10% within England. However 6 are within the worst 25% nationally. These are within Poole Town, along Sterte road, Parkstone around Castle Hill and the railway station, Penn Hill around Vale Road and Crescent Road and areas of Branksome East and West along the north side of Ashley Road and Poole Road.

3.18 Over a third of Poole's SOAs fall within the 25% of SOAs that are least deprived by this measure.

	Number of Poole SOAs in each range
Worst 10% in England	0
Worst 10-25% in England	6
Worst 25-50% in England	27
Worst 50-75% in England	23
Worst 75-100% in England	35

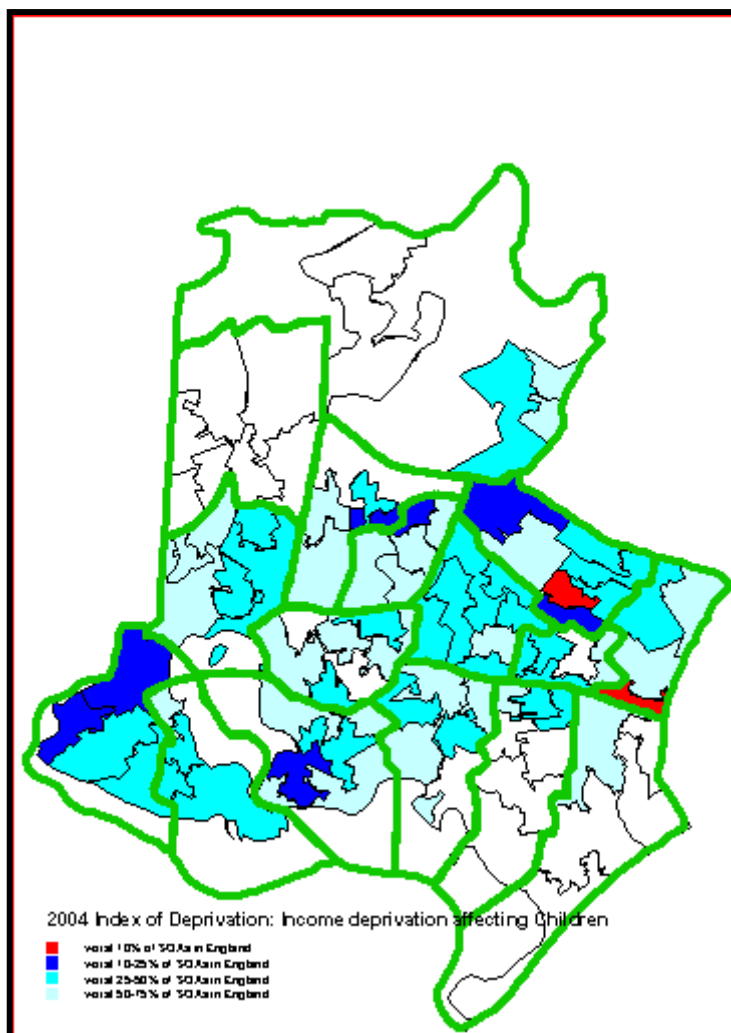


Domain includes:

- Social and private housing in poor condition (2001).
- Houses without central heating (2001).
- Air quality (2001).
- Road traffic accidents involving injury to pedestrians and cyclists (2000-2002).

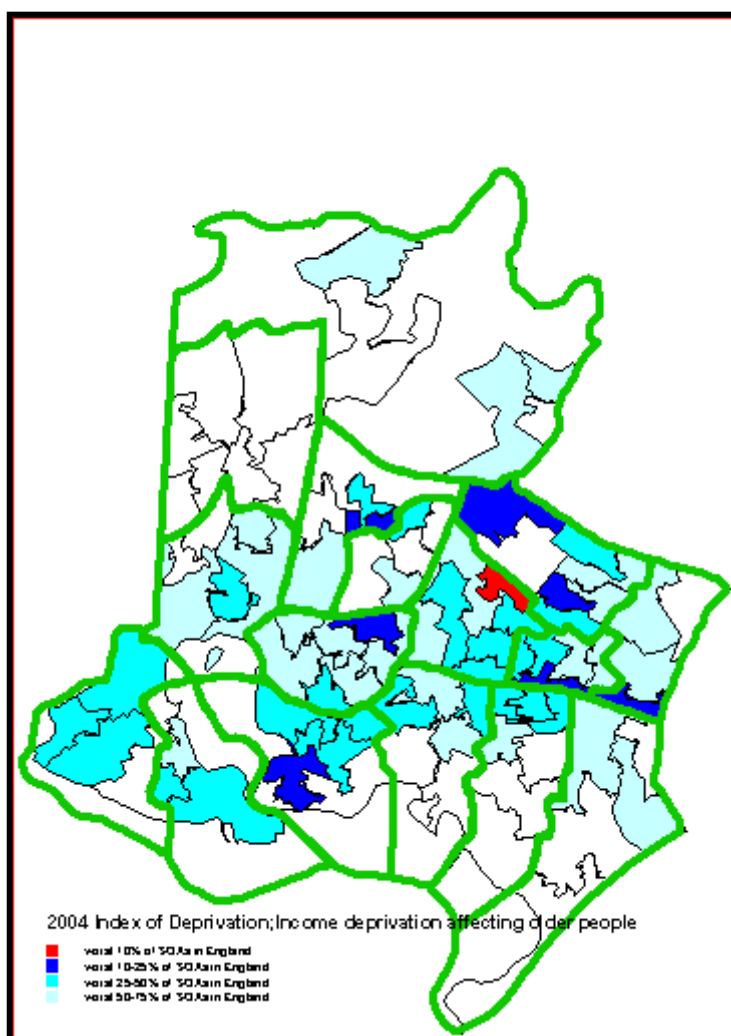
- 3.19 **Income Deprivation affecting Children.** There are two SOAs within Poole that are within the worst 10% in England. These are in Alderney (the Melbury Avenue/ Tollard Close area and in Branksome East (the Princess Road area). There are a further seven SOAs within the worst 25% of SOAs nationally, these are in parts of Alderney the two Canford Heath Wards, Hamworthy West and Poole Town Wards.
- 3.20 Over a quarter of Poole's SOAs fall within the 25% of SOAs that are the least deprived areas nationally on this measure..

	Number of Poole SOAs in each range
Worst 10% in England	2
Worst 10-25% in England	7
Worst 25-50% in England	30
Worst 50-75% in England	28
Worst 75-100% in England	24



- 3.21 **Income Deprivation affecting Older People.** There is one SOA that features in the ranking of the worst 10% nationally. This is in Newtown ward, adjacent to Trinidad school. There are an additional seven SOAs that are within the worst 25% nationally. These include parts of Poole Town, Oakdale, Canford Heath West, Alderney and the two Branksome wards.
- 3.22 Over a third of Poole's SOAs fall within the 25% of SOAs that are the least deprived areas nationally on this measure..

	Number of Poole SOAs in each range
Worst 10% in England	1
Worst 10-25% in England	7
Worst 25-50% in England	25
Worst 50-75% in England	27
Worst 75-100% in England	31



Source: Index of Multiple Deprivation, Office of the Deputy Prime Minister, 2004  
 Map Licence: Based upon the Ordnance Survey mapping with the permission of the Controller of Her Majesty's Stationary Office. © Crown copyright. Unauthorised reproduction infringes Crown copyright and may lead to prosecution or civil proceedings.  
 Borough of Poole License No. LA 078980